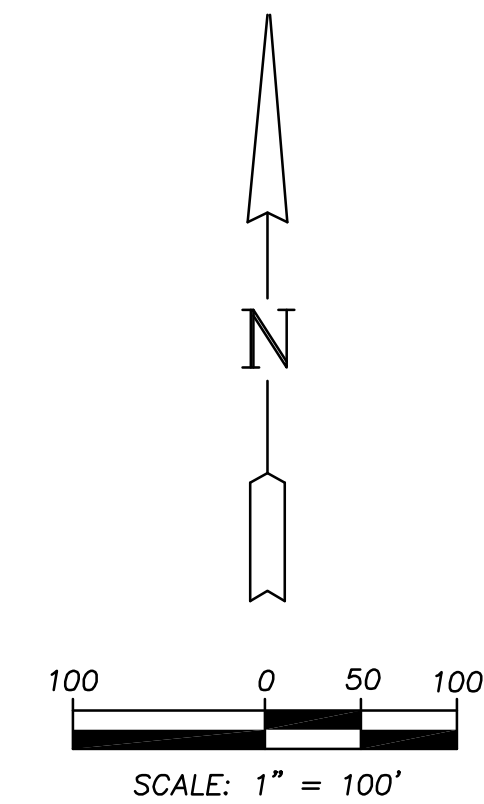
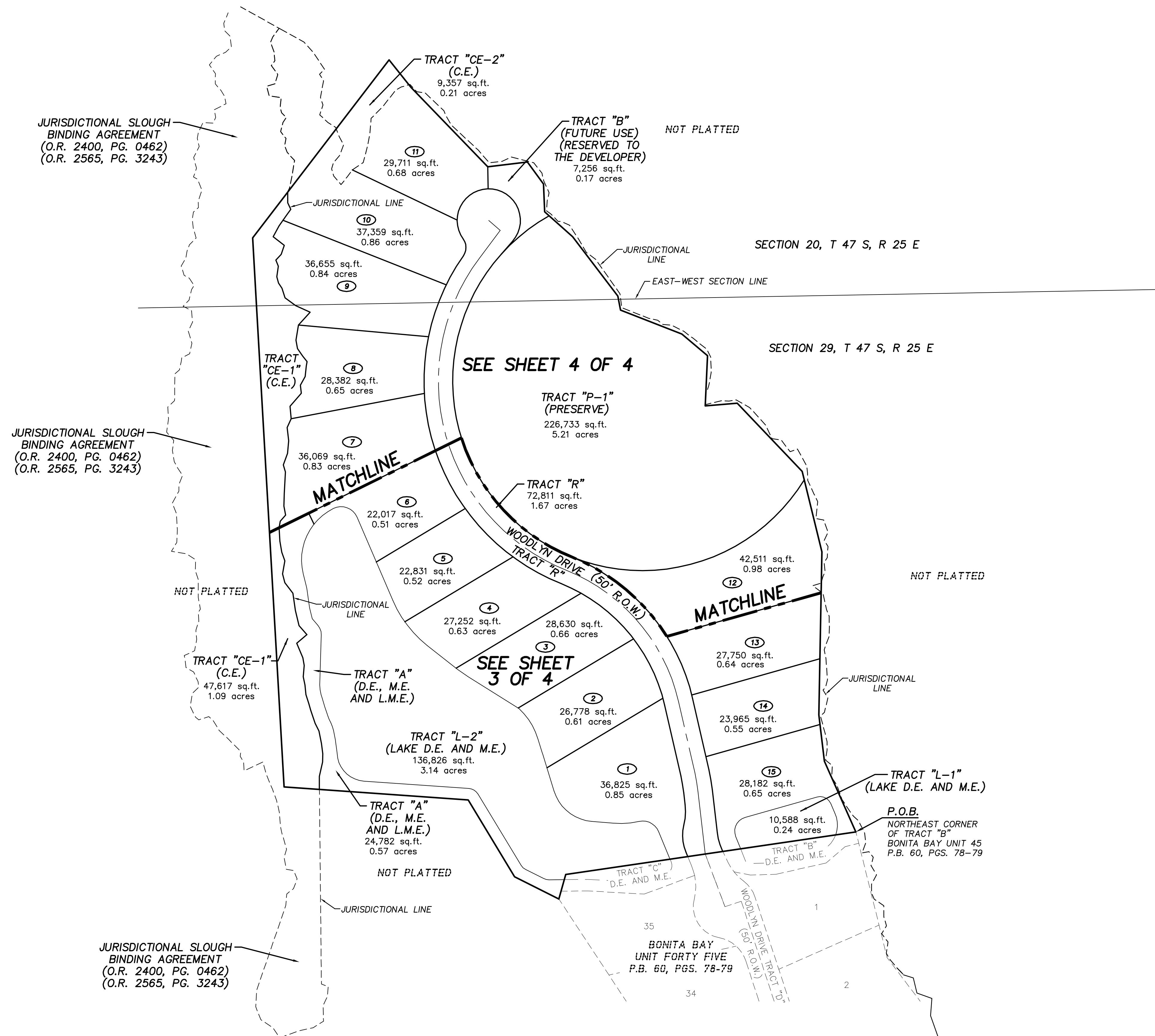


BAYWOODS PHASE TWO REPLAT

A SUBDIVISION LYING IN SECTIONS 20 AND 29,
TOWNSHIP 47 SOUTH, RANGE 25 EAST,
CITY OF BONITA SPRINGS, LEE COUNTY, FLORIDA

INSTRUMENT NO. _____

SHEET 2 OF 4



LEGAL DESCRIPTION

A PARCEL OF LAND LYING IN SECTIONS 20 AND 29, TOWNSHIP 47 SOUTH, RANGE 25 EAST, LEE COUNTY, FLORIDA, BEING MORE PARTICULARLY DESCRIBED AS FOLLOWS:

BEGINNING AT THE NORTHEAST CORNER OF TRACT "B" OF THE PLAT OF BONITA BAY UNIT FORTY FIVE AS RECORDED IN PLAT BOOK 60, PAGES 78 THROUGH 79, PUBLIC RECORDS OF LEE COUNTY, FLORIDA;
THENCE SOUTH 81°40'14" WEST ALONG THE NORTHERLY LINE OF SAID PLAT A DISTANCE OF 510.37 FEET;
THENCE LEAVING SAID LINE SOUTH 15°19'50" WEST A DISTANCE OF 44.37 FEET;
THENCE NORTH 63°18'30" WEST A DISTANCE OF 86.30 FEET;
THENCE NORTH 31°09'08" WEST A DISTANCE OF 156.14 FEET;
THENCE NORTH 85°57'35" WEST A DISTANCE OF 321.11 FEET;
THENCE NORTH 03°16'40" WEST A DISTANCE OF 838.44 FEET;
THENCE CONTINUING NORTH 03°16'40" WEST A DISTANCE OF 118.44 FEET;
THENCE NORTH 37°27'04" EAST A DISTANCE OF 390.33 FEET;
THENCE SOUTH 38°41'57" EAST A DISTANCE OF 61.08 FEET;
THENCE SOUTH 43°56'57" EAST A DISTANCE OF 192.40 FEET;
THENCE NORTH 83°03'03" EAST A DISTANCE OF 69.69 FEET;
THENCE SOUTH 36°11'57" EAST A DISTANCE OF 47.36 FEET;
THENCE SOUTH 02°11'57" EAST A DISTANCE OF 48.47 FEET;
THENCE SOUTH 48°26'57" EAST A DISTANCE OF 65.28 FEET;
THENCE SOUTH 37°11'57" EAST A DISTANCE OF 129.71 FEET;
THENCE SOUTH 11°11'57" EAST A DISTANCE OF 5.59 FEET;
THENCE SOUTH 11°11'16" EAST A DISTANCE OF 19.29 FEET;
THENCE SOUTH 68°41'57" EAST A DISTANCE OF 114.33 FEET;
THENCE SOUTH 49°41'57" EAST A DISTANCE OF 58.66 FEET;
THENCE SOUTH 02°33'03" WEST A DISTANCE OF 87.10 FEET;
THENCE NORTH 85°28'00" EAST A DISTANCE OF 55.66 FEET;
THENCE SOUTH 43°41'57" EAST A DISTANCE OF 163.82 FEET;
THENCE SOUTH 13°41'57" EAST A DISTANCE OF 144.08 FEET;
THENCE SOUTH 01°03'03" WEST A DISTANCE OF 284.01 FEET;
THENCE SOUTH 06°56'57" EAST A DISTANCE OF 81.10 FEET;
THENCE SOUTH 23°56'57" EAST A DISTANCE OF 134.66 FEET TO THE POINT OF BEGINNING OF THE PARCEL HEREIN DESCRIBED;

CONTAINING 22.75 ACRES OF LAND, MORE OR LESS;
SUBJECT TO EASEMENTS AND RESTRICTIONS OF RECORD.